

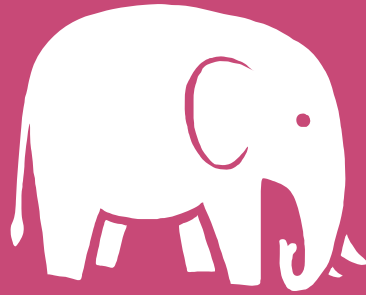
HANDBAGS FOR SALE IN AID  
OF

# SAMBHALI TRUST

KINDLY DONATED BY TIM HALL



<https://www.sambhali-trust.org/index.html>



# *Sambhali Trust*

is a non-profit charitable organisation based in Jodhpur, India, focusing on the empowerment of women and girls in Rajasthan.

Sambhali has set up empowerment centres, self-help groups, and scholarship programmes. It also runs innovative projects, such as 'My Mask, Pride of My City' an awareness campaign to fight Covid 19.

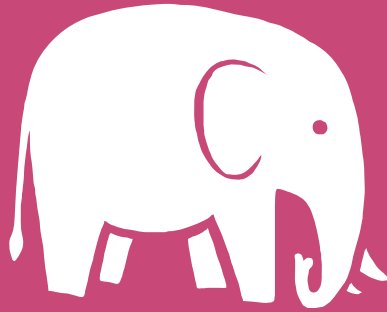
If you would like to find out more, or browse their collections:

<https://www.sambhali-trust.org/index.html>

Or for information on the bags:

[jennymorisetti@hotmail.com](mailto:jennymorisetti@hotmail.com)

07801240103



## *The Handbags*

The bags within this brochure have been generously donated by Tim Hall, to sell on behalf of the Sambhali Trust.

The bags are priced at up to 50% off RRP.

There are over 200 bags so there should be something to suit everyone's taste! This brochure contains just a small sample of the bags, the remainder can be viewed near Shaftesbury, Dorset.

# ALISON VANDERLANDE

## ANIMAL PRINT LEATHER HANDBAGS

Statement animal print leather bags, with two front pockets and a short shoulder strap.

Measurements: 33 x 35 x 14 cm (LxHxD)

**Each bag is £190** and comes in its original protective outer bag.

(The middle image shows the reverse side of the bags)





# VOLKER LANG

## LEATHER CLUTCH BAGS

The used look of these bags is created by small, irregular cracks and nuances of colour on the surface. This is a desired effect, which is enhanced during normal use and makes each bag special and unique.

They are made of Italian calf leather, have a chequered inner lining and close with a purse clasp.

The **Lola Vintage BT2** comes in both Fuchsia and Grey. **Each bag is £110.**  
Measurements: 21 x 24 x 7cm (WxHxD)

The **Hildegard**, a more petite purse, comes in burnt orange and is **£70**

All bags come in their original protective felt outer bag.



# I MEDICI

## SOFT ITALIAN LEATHER HANDBAGS

Beautiful Tenero Soft Leather Italian Hobo bags, showcasing the epitome of Italian Craftsmanship.

Luxury leather bags with 3 inside pockets, a central zip up pocket, 1 side zip pocket and a slot pocket. Comes with a detachable cross body strap which is adjustable. Zip fastening along the top of the bag and one zip pocket on the outside.

The bags come in a range of colours: Naples Tan/Blue Grey/Light Grey/Mid Grey/Conker

**Each bag is £75**





# TAMARA FOGLE

## HANDMADE LEATHER HANDBAGS



The bags are made using the finest Italian leather, and produced in the UK in a family run workshop, ensuring the heritage of British Industry and Design. They have a signature vintage aesthetic.

**Each bag is £135** and comes in a pink and white striped outer bag (as seen in the image at the top of this page)



# LU A

## VELVET & TWEED HANDBAGS



Black Velvet w/  
Embroidered  
Spots (S) £19



Black Velvet  
(S) £19



Grey Velvet w/  
Roses (S) £39



Duck Egg Blue  
and Grey Velvet  
(S) £19



Black Velvet w/  
Bow (M) £25



Black Velvet  
Ruffle w/  
Drawstring (M)  
£32



Blue and Grey  
Velvet Bag w/  
Roses (M) £39



Black Velvet  
(L) £29



Black Velvet  
Ruffles (L) £55



Pink & Grey Tweed  
w/ Grey Velvet  
Handle (S) £19



Blue Tweed w/  
Navy Velvet  
Handle (L) £29



Pink & Grey Tweed  
w/ Grey Velvet  
Handle (L) £29



# EASTON

## TWEED HANDBAGS



**Fawn Tweed w/ Blue & Green Check, Leather Handle (S) £35**



**Grey Tweed w/ Yellow, Blue & Red Stripes, Leather Handle (S) £35**



**Heather & Ochre Tweed w/ black Velvet & Black Velvet Strap (M) £30**



**Grey, Green & Rust Tweed w/ Black Velvet & Black Velvet Strap (M) £30**



**Autumn Tweed w/ Brown Leather Handles (M) £30**



**Purple & Ochre Tweed w/ Black Leather Handles (L) £40**

# GLENALMOND TWEED

Committed to British Craftsmanship since 1992



**Harris Tweed Bright Blue w/ Purple Stripes, Strong Long Brown Canvas Strap.**

**£55**

**This is the last one we have, so don't wait around!**

# Like what you see?

To purchase or view a bag:  
jennymorisetti@hotmail.com  
07801240103

You can view the collection by appointment in a COVID safe event barn.

Postage not included.

Local delivery is available - near Shaftesbury, Dorset.

For more information on Sambhali Trust:

Facebook page - <https://www.facebook.com/sambhaliUK/>

Instagram - <https://www.instagram.com/sambhalitrust/>

